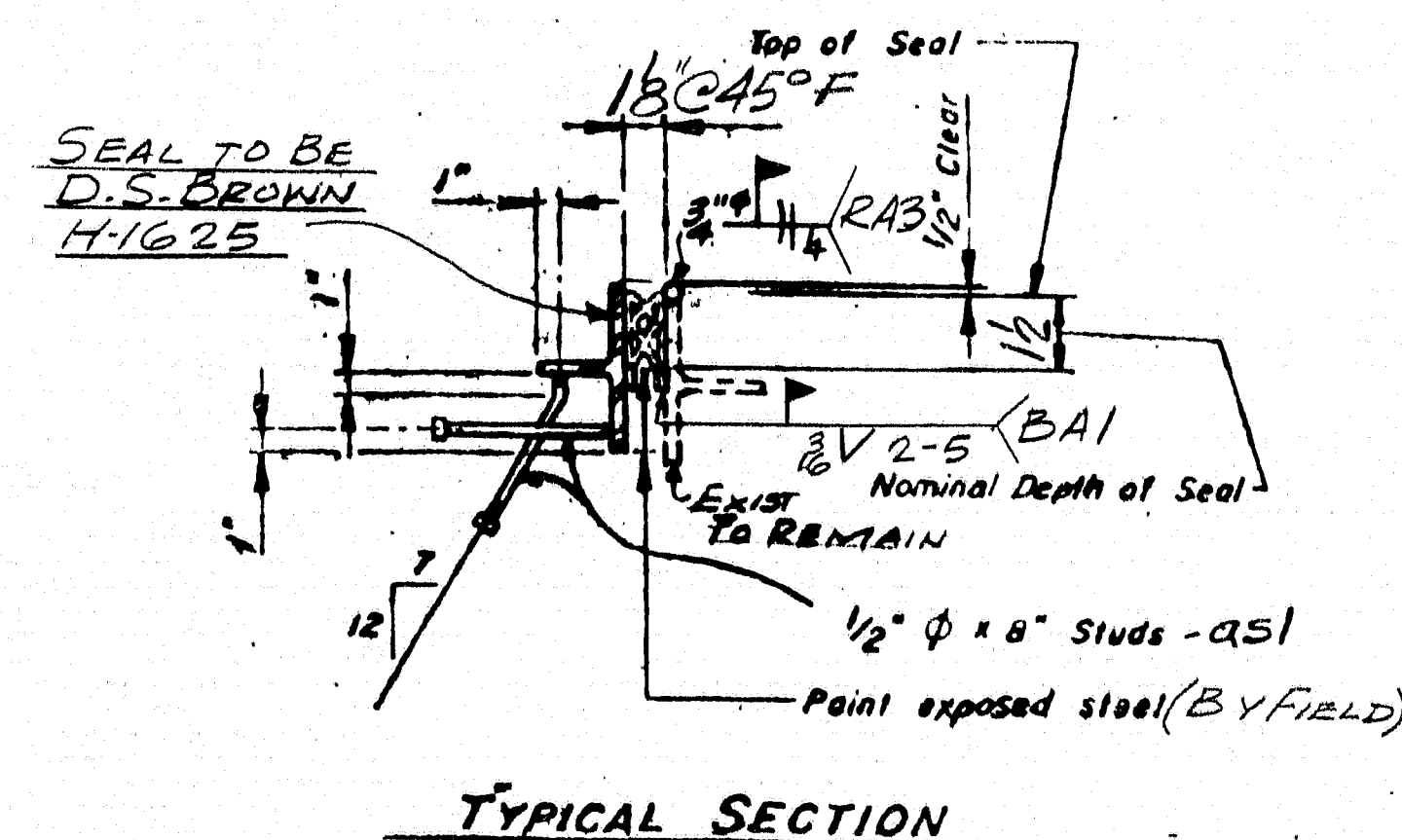
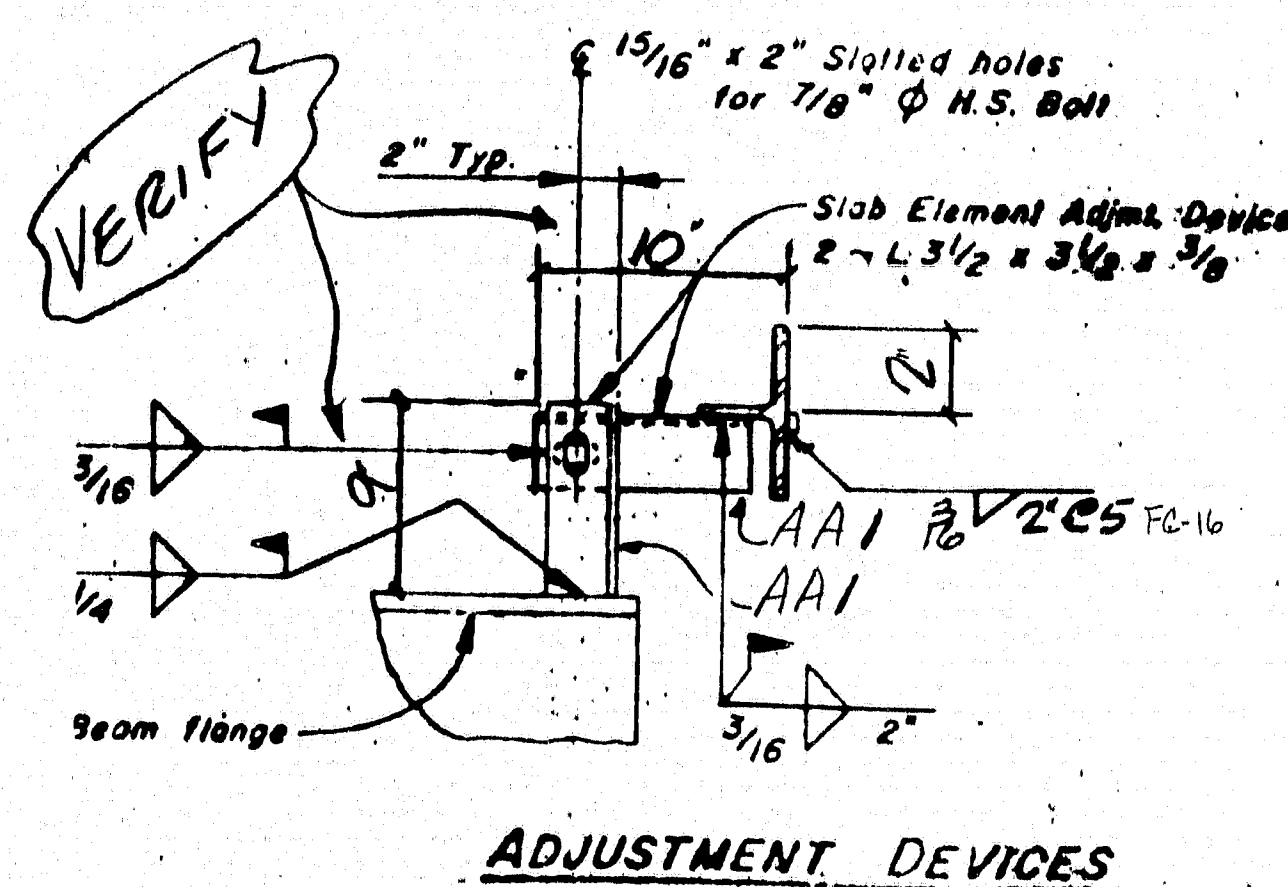


BILL OF MATERIAL				
QTY.	MARK	SHAPE	LENGTH	REMARKS
1	EJ3R	WT4x24	21	10
1	EJ3L	DO	21	10
16	BA1	BAR 1x3/8	1	0
44	BA1	2" x 8" STUDS	8	
16	AA1	3/8 x 32 x 3	9	
8	FIELD	8" BOLTS	24	1/4" x 2" WASH
2	RA3	3/4" ROD	21	10
18	BA1	BAR 1x3/8	1	0
1	FIELD	COMP SEAL	49	0
D.S. BROWN #41625 ADHESIVE SEAL TO EXTEND 2' BEYOND FASCIA				
PIN No. 4158.00				
PROJ No. IR-IM-95-9(130)				
BRIDGE No. 6100				
PAY ITEM No. 520-241				



105-302

MATERIAL: ASTM A36 & A3 NOTED
BOLTS: ASTM A325
HOLES: AS NOTED
ELECTRODES: SEE WELDING PROC.
SURFACE PREP: SS PC-SPG
PRIMER: NONE

STATE OF MAINE
DEPARTMENT OF TRANSPORTATION
CONSTRUCTION DIVISION

☒ NO EXCEPTIONS TAKEN ☐ EXCEPTIONS NOTED

JUL 13 1992

☐ RETURNED FOR CORRECTIONS ☐ REJECTED

DOCUMENT REVIEWED IN ACCORDANCE WITH SECTION 105 OF STANDARD SPECIFICATIONS

HOLES AS NOTED
PAINT SEE NOTE ABOVE

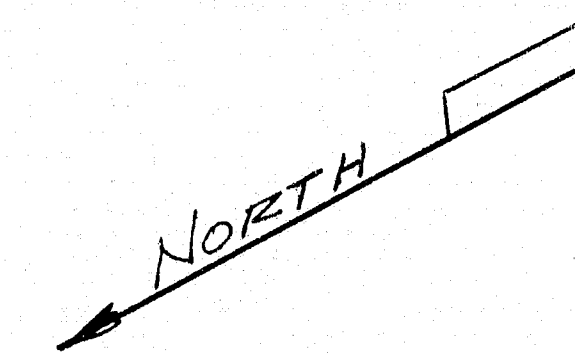
DRAWING COVERS: ARMORED JOINT MOD. - TYPE I
ABUTMENT No. 1

DATE SUB. PROJECT I-95 SOUTHBOUND
OVER FOXCROFT RD.
LOCATION HOULTON, ME.

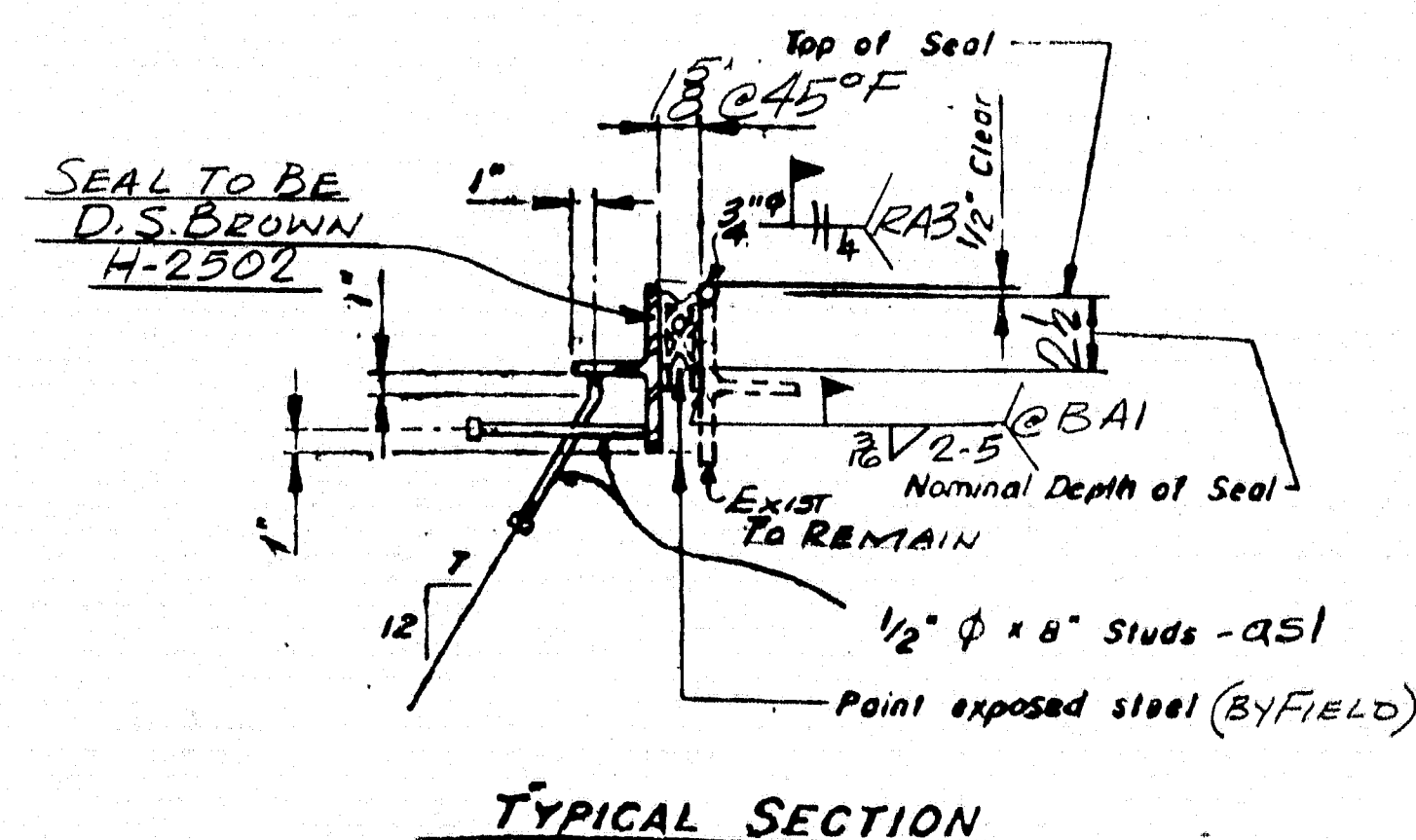
ARCHITECT
ENGINEER STATE OF MAINE D.O.T.
CUSTOMER C.P.M. CONSTRUCTORS.

MERRIMACK
SHEET METAL
119 HALL ST.
CONCORD N.H.
03301
Tel. (603) 224-7766
Fax (603) 224-7925


DRAWN BY: J.R.F.
CHKD. BY:
JOB NO. 5760
DWG. NO. 3



MATERIAL: ASTM. A36 & A5 NOTED
OLTS: ASTM- A325
OLBS: A3 NOTED.
ELECTRODES: SEE WELDING PROC.
SURFACE PREP: SSPC-SPG
PRIMER: NONE



105.303

STATE OF MAINE DEPARTMENT OF TRANSPORTATION CONSTRUCTION DIVISION		
<input checked="" type="checkbox"/> NO EXCEPTIONS TAKEN	<input type="checkbox"/> EXCEPTIONS NOTED	
JUL 13 1982		
<input type="checkbox"/> RETURNED FOR CORRECTIONS	<input type="checkbox"/> REJECTED	
DOCUMENT REVIEWED IN ACCORDANCE WITH SECTION 10 OF STANDARD SPECIFICATIONS		
 _____ <div style="display: flex; justify-content: space-between;"> DATE TITLE </div>		
1	6/23	PER MAINE D.O.T.
REV NO	DATE	DESCRIPTION
HOLE	AS NOTED	
PAIN	SEE NOTE ABOVE	

DRAWING COVER.		<u>ARMORED JOINT MOD. - TYPE I</u> <u>ABUTMENT NO. 2</u>	
DATE SUB.	PROJECT	<u>I 95 SOUTH BOUND</u> <u>OVER FOXCROFT RD.</u>	
SCALE <u>1/4"</u>	LOCATION	<u>HOULTON, ME.</u>	
	ARCHITECT		
DATE APP	ENGINEER	<u>STATE OF MAINE D. O. T.</u>	
DATE DIST	CUSTOMER	<u>C.P.M. CONSTRUCTORS</u>	
MERRIMACK SHEET METAL		DRAWN BY: <u>J.P.F.</u>	
119 HALL ST. CONCORD N.H. 03301		CKD. BY <u>JB</u>	
Tel. (603) 224-7766 Fax (603) 224-7925		JOB NO. <u>5760</u>	
		DWG. NO. <u>4</u>	